



# Les composants du M2M et des Smarts Grids : évolutions et perspectives

**Chira Vinci**

Smart Grid EMEA Marketing Manager  
STMicroelectronics

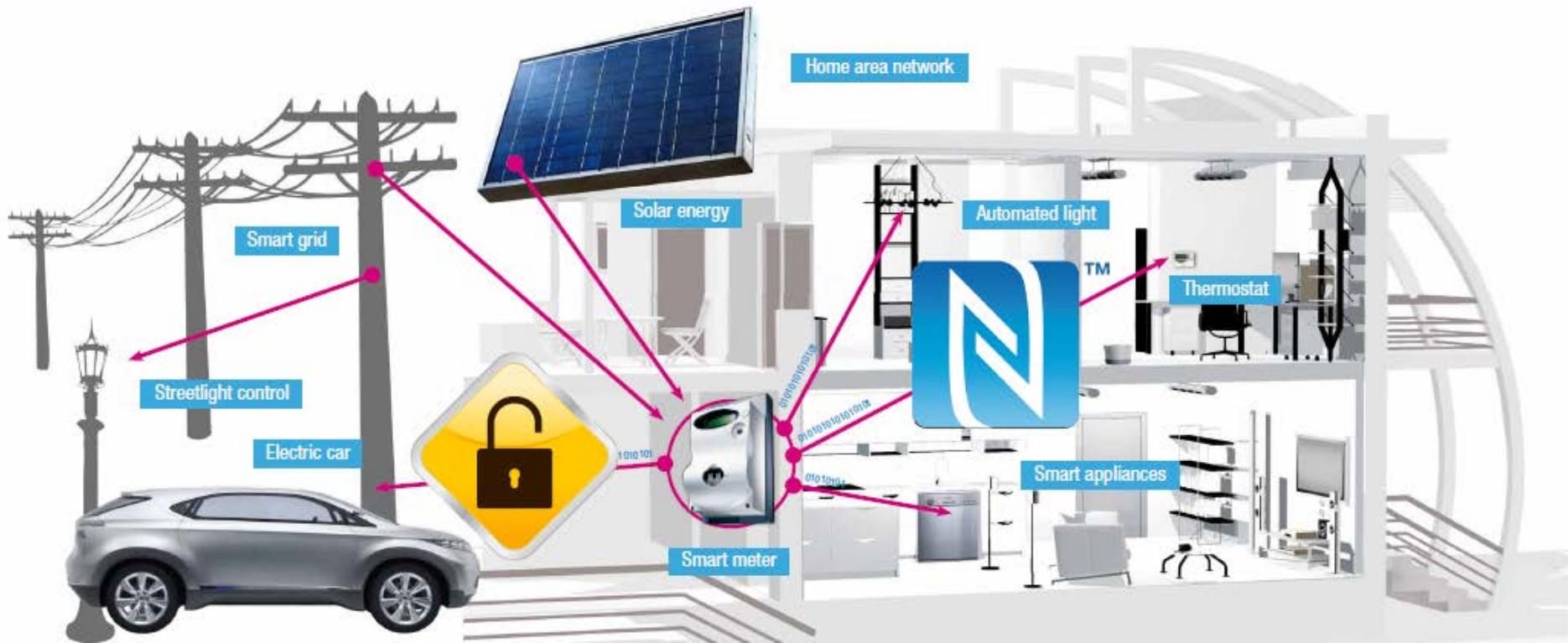
*Chira.vinci@st.com*



**OCOVA Forum, Gap 16/17 Sept 2014**

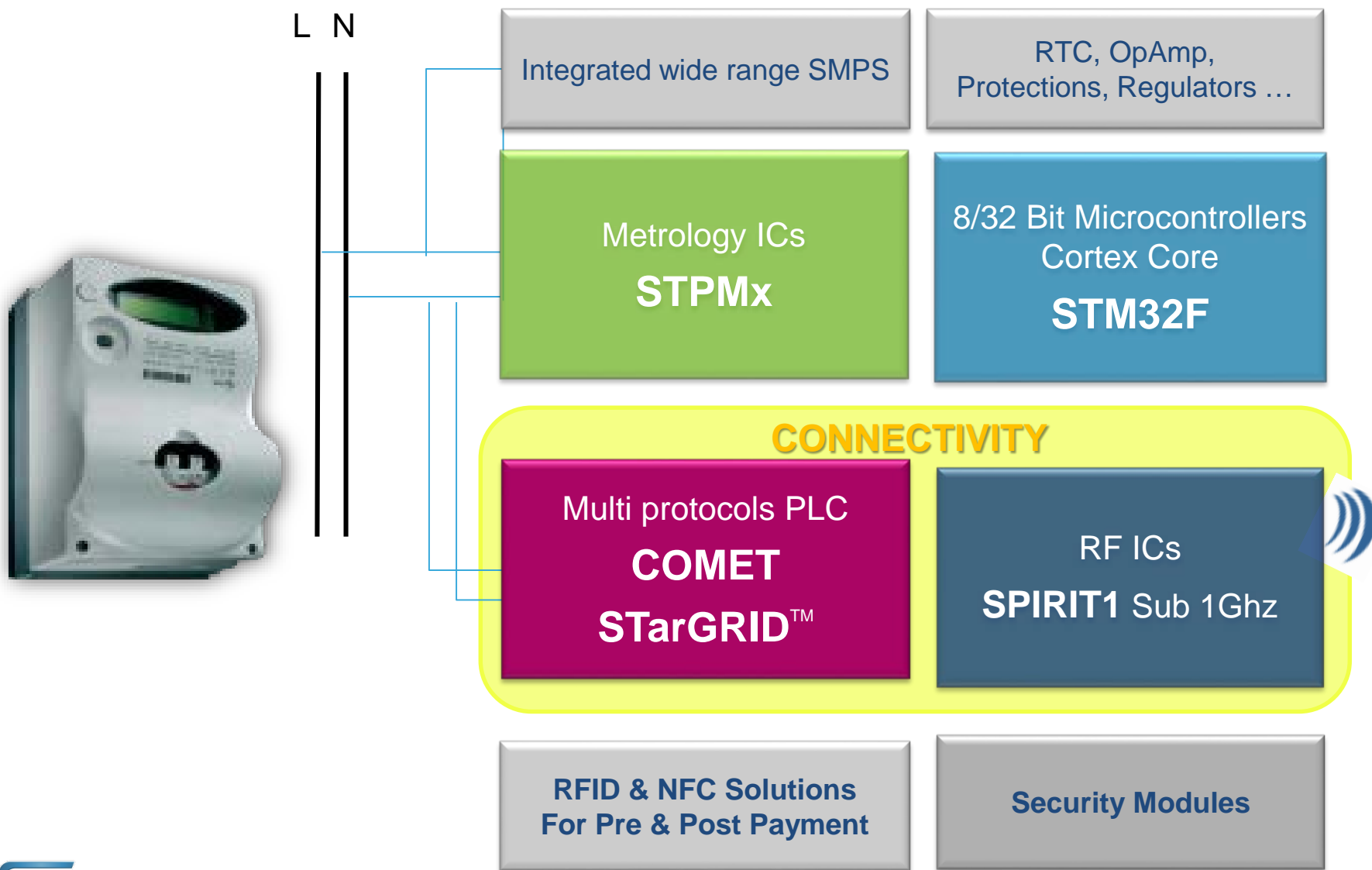
# The Smart Meter at the heart of Smart Grid

2



# ST as one stop supplier for Smart Meters

3



# ST Position in Smart Meters

4



- Market Leadership and in-field experience
  - **40Mu+** Meters proven PLC technology in 20years+
  - Extensive Meters&More and PRIME deployments



- Leading role in Standardization Organisms & Partnership with Smart Grid Leaders
- Complete Metering ICs offer fitting different architectures needs and evolution



- Innovation with future proof IPs, technologies, hw and firmware integrated solutions

Key market standard and ST deployments

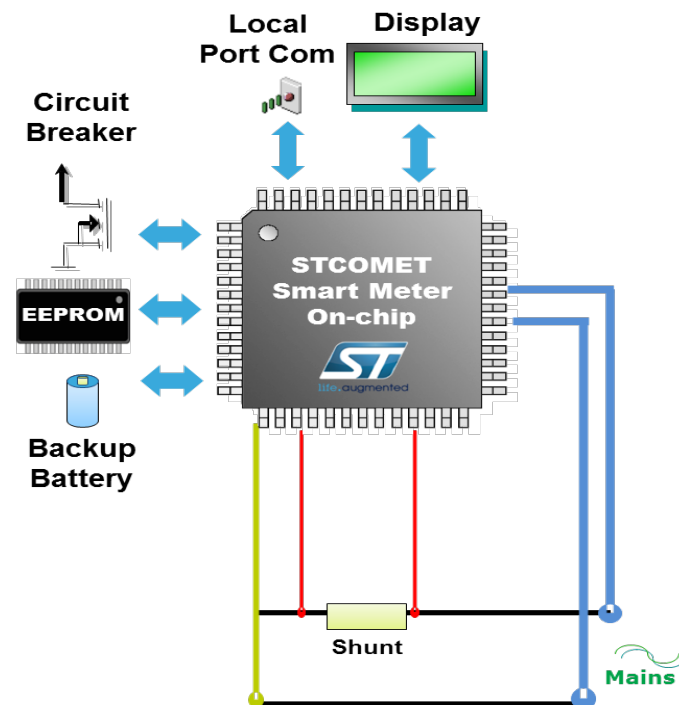
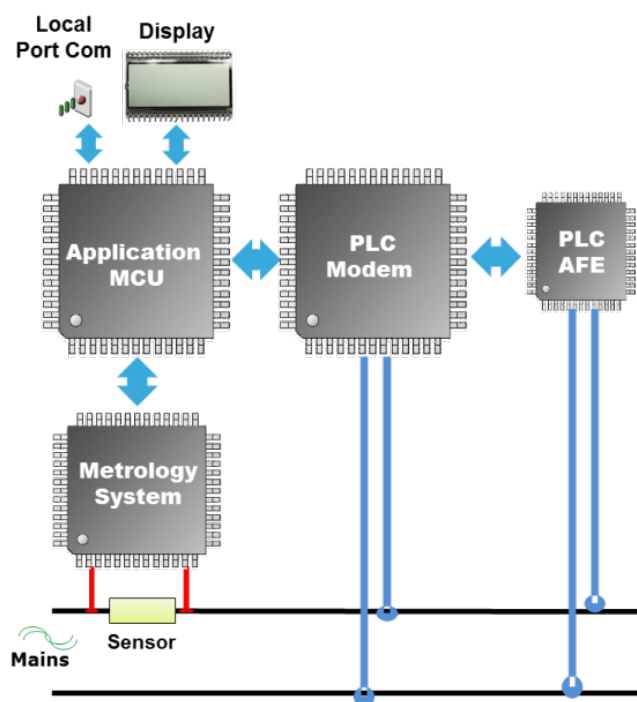


# Smart Meters SoC Evolution

5

From multiple highly complex and specialized chipset ..

... to STCOMET fully integrated System on Chip



- Compact, low consumption, cost efficient
- Re-programmable PLC for protocol updates
- Embedded Metrology

# STCOMET Smart Meter SoC

6

## ■ Power Line Modem – Multi protocols

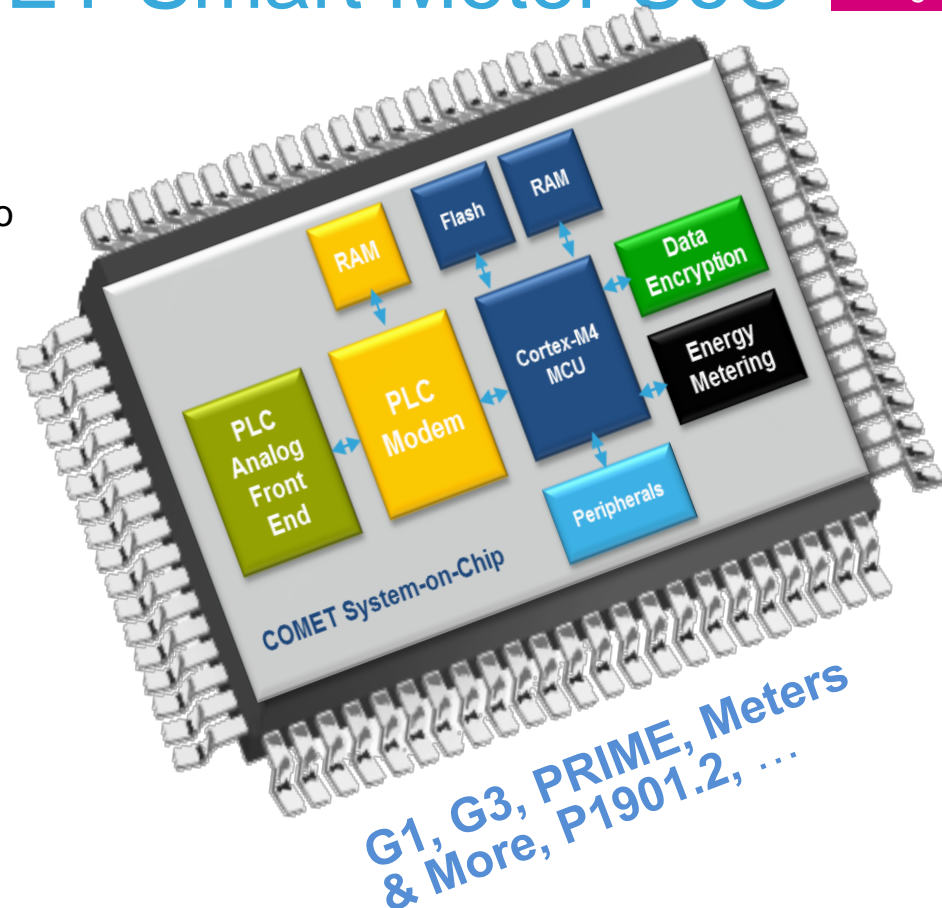
- Dedicated Reprogrammable DSP free Cortex M4 to application use
- Integrated RX/ Tx AFE and Line Driver
- CENELEC A , FCC, ARIB Bands, 500kbps

## ■ Application Engine Cortex M4 Core

- Cortex-M4 Core @96MHz, FPU
- 1MB Flash & 128kB RAM embedded memories

## ■ Energy Metering embedded

- > Class 0.2 Meter requirements
- 3 Independent 24-bit ADC (Vp, Ip, In)
- Embedded Metrology DSP
- Active, Reactive, Apparent, RMS values calculation
- Instantaneous values and power quality parameters



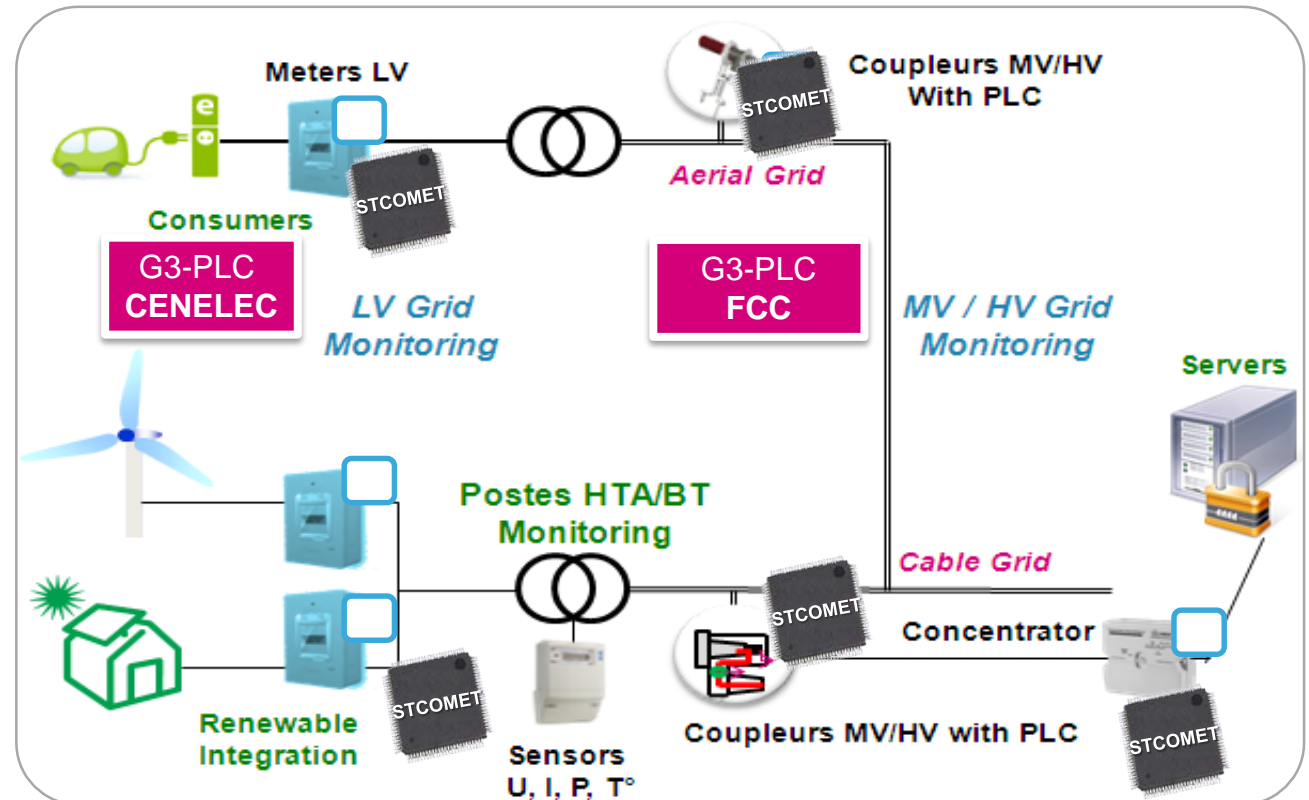
## ■ Embedded Security Engine

- AES 128/192/256, Advanced mode (GCM, CCM, ECB, GMAC...)
- ISO7816 USART IF for Secure Element

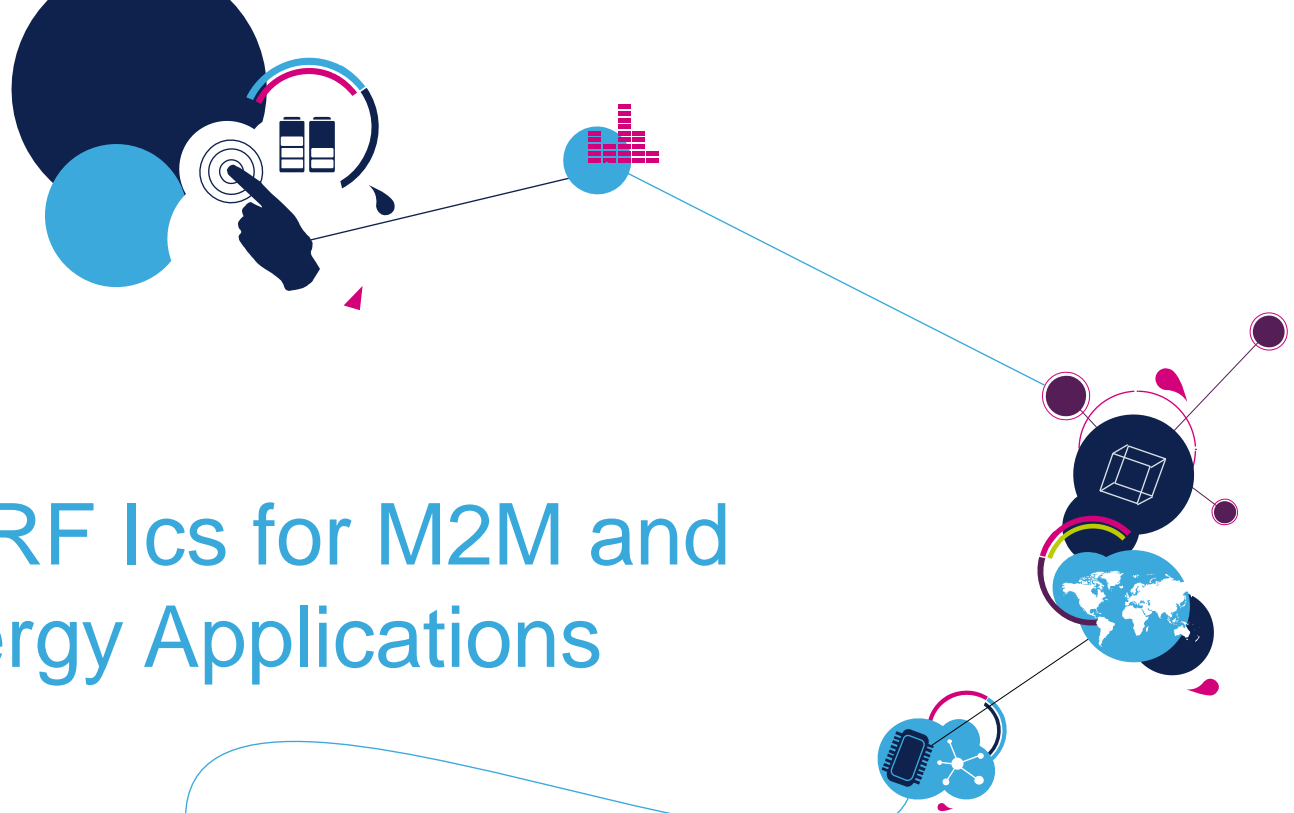


# COMET in SOGRID Project : an Advanced Program for Smart Grid

- ❖ **SOGRID** targets a full eco-system for Grid Monitoring and Control, introducing PLC communication at Medium Voltage Level
  - **COMET in Smart Meters – LV Grid**
  - **COMET in Smart Sensors (FCC Band) – MV Grid for peak prevention and outage fast management**



# Sensors and RF Ics for M2M and for Smart Energy Applications





# ST Sensors Offer and evolution

9

ST offers numerous possibilities of combinations to complete Sensor solutions



## Accelerometer ( $m/s^2$ )

Senses the linear acceleration, tilt (Portrait/landscape), shocks, Free fall, direction detection, vibrations, linear displacement



## Gyroscope ( $^{\circ}/s$ , dps)

Measure complex motion accurately in free space, tracking the position and rotation of a moving object



## Magnetometer (gauss)

Senses the magnetic field, compass, to provide absolute position

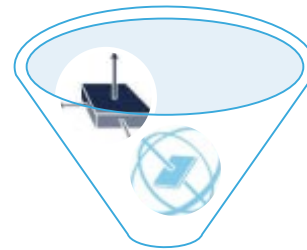


## Environmental sensors

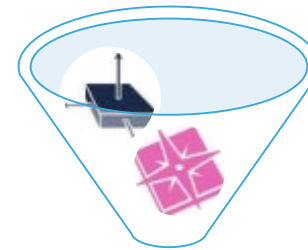
Measures Env conditions such as pressure (mbar), humidity (%), UV, ...



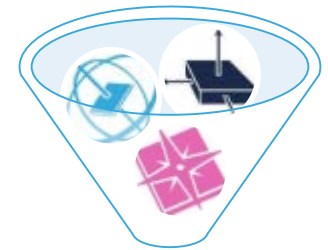
6-axis solution for activity trackers



6-axis IMU



E-compass



>9-axis Sensing



*Deliver accurate and reliable motion-sensing information*



E-compass solution for outdoor activities



>9-axis solution for IoT

# ST Wireless Offer Summary

10

## RF Modules

- ❑ WIFI Modules
- ❑ Bluetooth Modules

## RF Chip Set

- ❑ Sub 1 GHz RF ICs
- ❑ 2.4GHz BlueNRG



- Smart Plugs & Energy Gateways

- Intelligent lighting & shadowing systems

- Gas & Water Meters

- Distributed sensors network





# RF Sub 1GHz transceiver: SPIRIT1

11

- Large Frequency bands: 150 up to 956 MHz
- Modulation schemes: FSK, GFSK, MSK, OOK and ASK
- Air data rate from 1 to 500 kbps
- Programmable channel spacing :12.5 kHz min
- Frequency Hopping & Antenna diversity algorithm
- AES 128-bit encryption co-processor
- **ST Stack + Wireless M-Bu + 6LoWPAN support**



**Power  
consumption**

**RF  
performances**

**SW Flexibility**

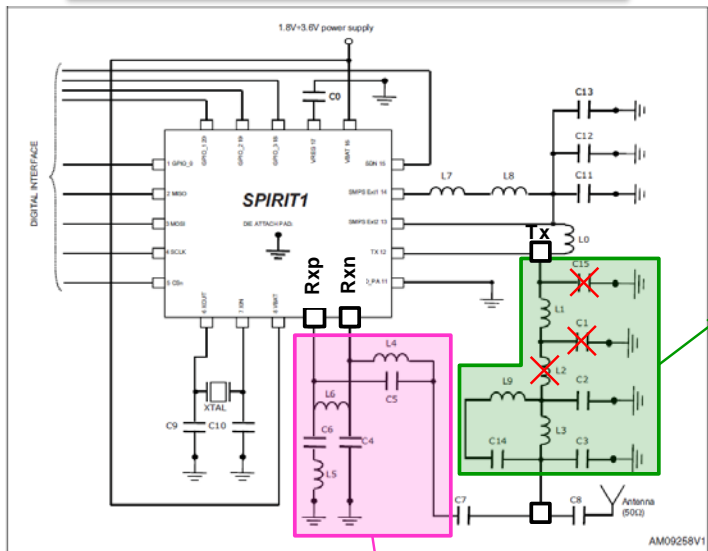
- 9mA in RX
- 18mA @ +10dBm
- < 1µA sleep mode (register retention)
- -121dBm @1,2Kbps RX sensitivity
- +16dBm max (boost) programmable output power
- < 1msec transition time (SDN to RF)
- Packet handler, Sniff mode, CSMA/CA
- Fully SW flexible : Several stacks + custom SW

# BALUN companionchip for SPIRIT1

12

**IPAD™ technology lcs** : Integrating high-quality RF passive components on a single glass substrate compacts matching components

16 passives - 7.5mm<sup>2</sup>

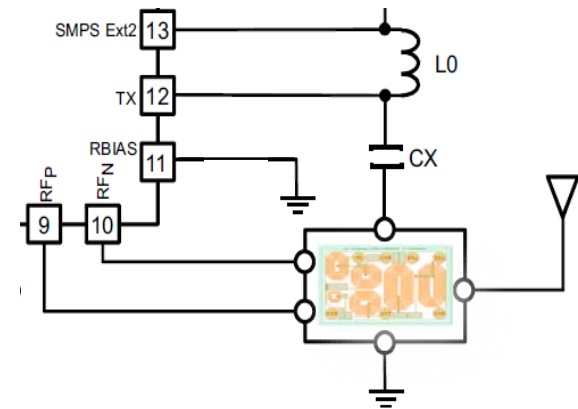


balun

filter

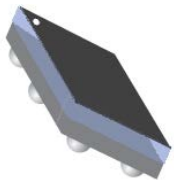


1 package - 2,8mm<sup>2</sup>



**BALUN 868MHz & 433MHz**

Technology on glass  
70% PCB space saving  
Faster Time to market  
High Reliability  
Improved RF solution

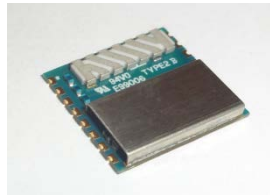
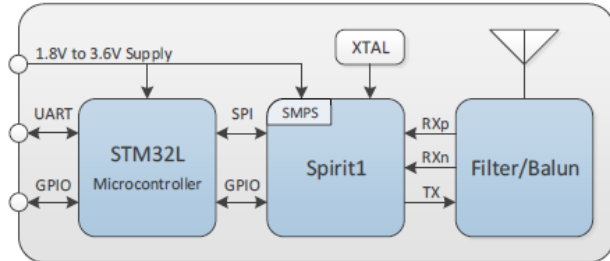


SOON

# ST RF Sub-1GHz modules

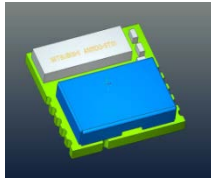
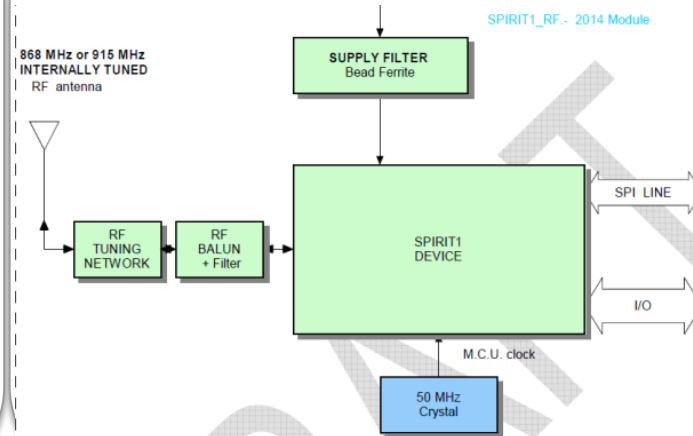
13

## Module with MCU (SP1ML)



14 x 13,4mm

## Module without MCU (SP1GRF)



11,5 x 13,5 mm

Certification

Flexibility

- Plug & play increasing time-to-market
- RF certification included
- MCU embedded option for SW integration

# ST BlueNRG and proprietary profiles

14

Bluetooth® 4.0 low-energy chip



## • Available profiles

- Alert Notification, Blood Pressure, Find Me, HID over GATT, Health Thermometer
- Heart Rate, Phone Alert Status, Proximity, Scan Parameters, Time Profile, Glucose

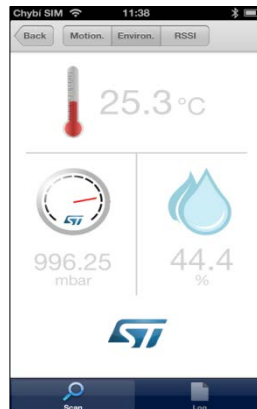
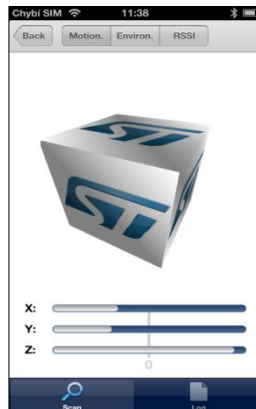
## • Proprietary profile: Sensor demo

### • Acceleration Service

Acceleration characteristic value  
Free Fall characteristic

### • Environmental Service

Temperature characteristic  
Android available



### Sensors

- LPS25H Barometer
- HTS221 Humidity Sensor
- LIS3DH Accelerometer





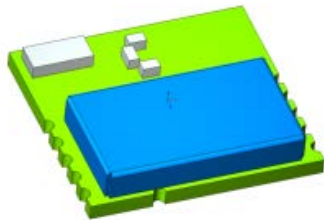
SOON



# Bluetooth Modules

15

## V4.0 Single-Mode Low Energy



SPBTLE-RF

- BlueNRG + 32 MHz Crystal + Balun (BALF-NRG) + Surface mount Antenna
- SPI vs. external MCU Microcontroller
- Very Compact : 11.5 x 13.5 x 2 mm
- FCC and CE certified
- QDID Qualified listing

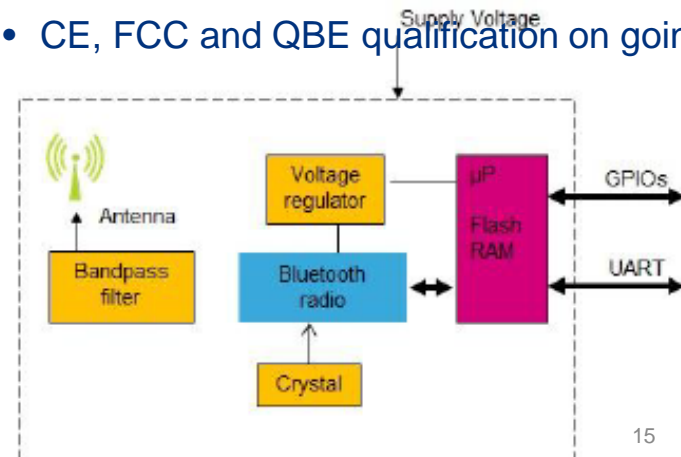
## V4.0 Dual -Mode Low Energy



SPBT2932

11.6 mm x 13.5 mm

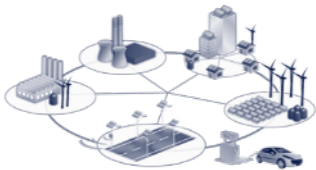
- RF Dual Mode Module ONLY
- Dual Mode Radio + Crystal + Surface mount Antenna + MCU
- Embedding BT v4.0 Classic & Low Energy
- CE, FCC and QBE qualification on going







## Smart Grid

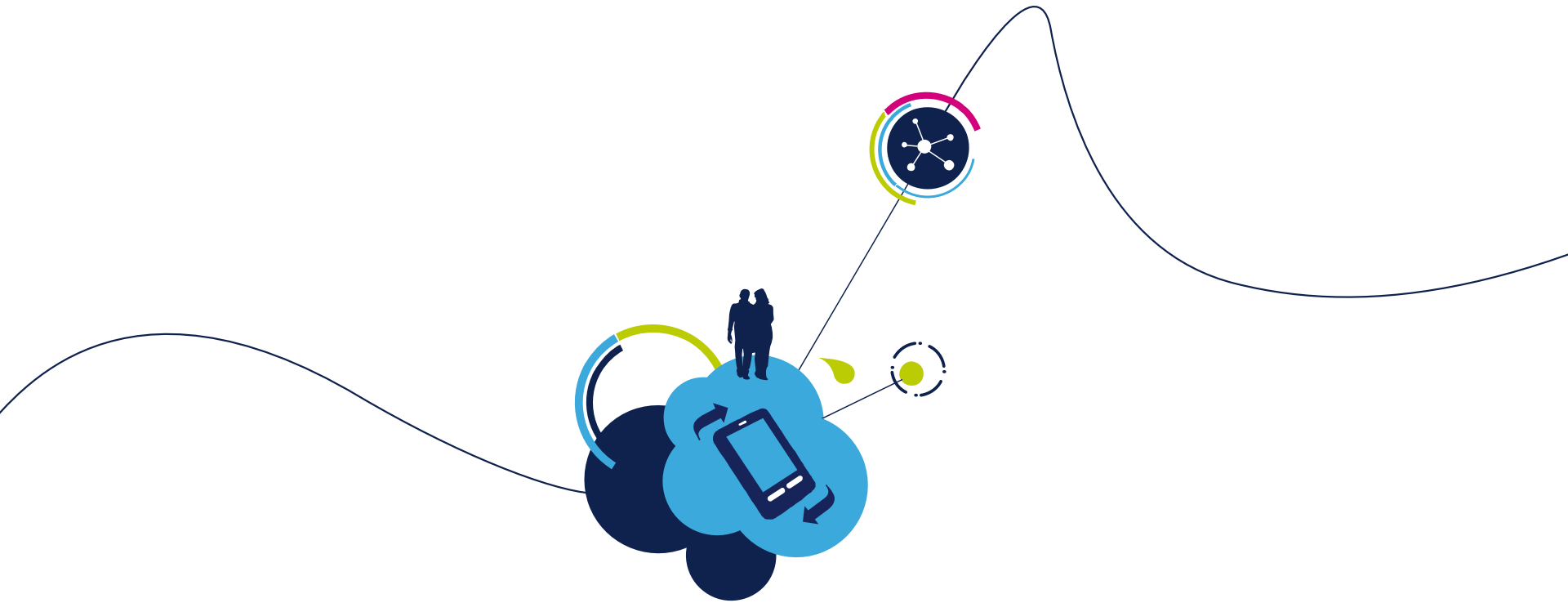


\$6B TAM in 2016  
CAGR 13-16: +14.2%

### Key Applications:

Smart Metering, Renewable Energy, Energy Saving, Power Conversion, HEV-EV, LED Lighting

- ST has a global products offer for Smart Meters and Smart Grid new markets
- ST PLC proven experience is a base for fast market needs adaptation and innovation, where integration, consumption and cost are increasing requirements
- ST portfolio on Sensors, embedded MCU and RF provides a wide bricks offer for innovation in Smart Energies with both discrete and integrated solutions



Thank you