

RIDER

Real-Time Optimization & Energy Efficiency

Offering Overview



Agenda

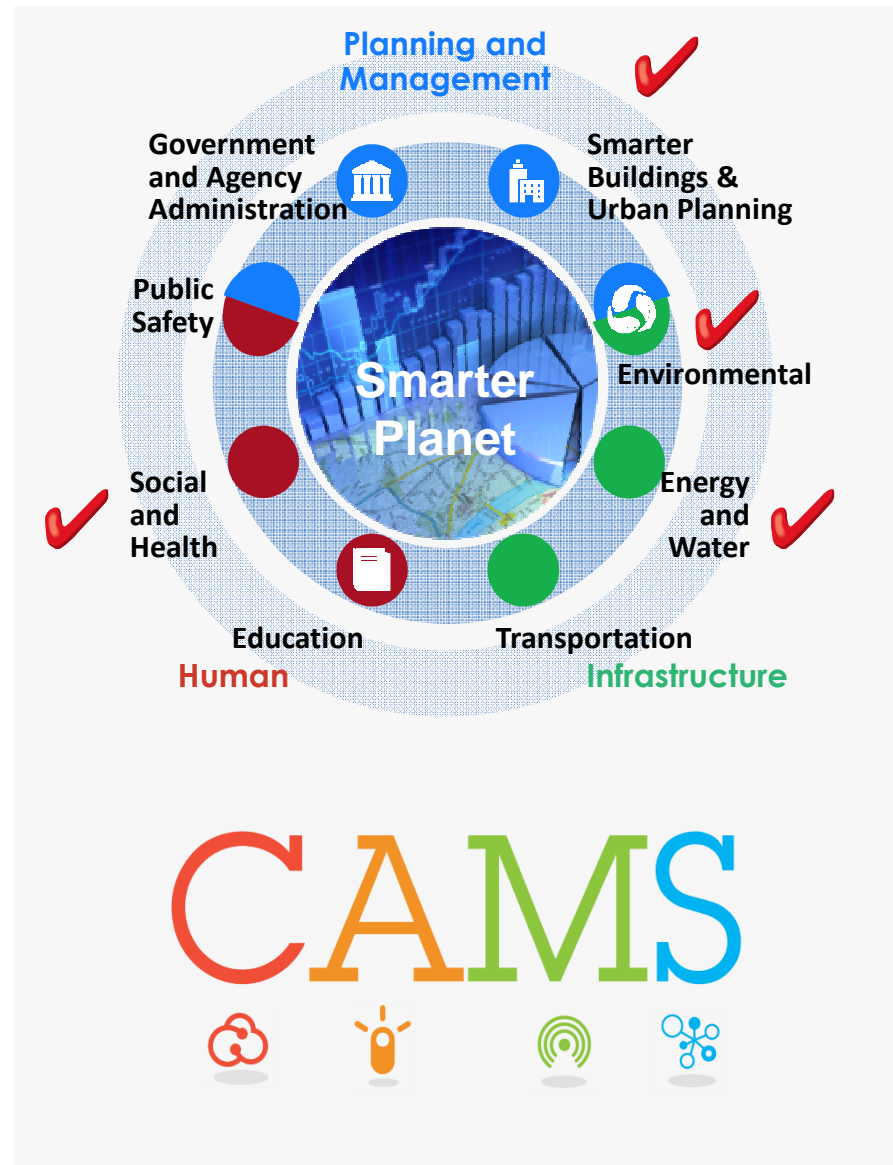


- ▶ Innovation Lab Mission
- ▶ Customer Needs
- ▶ The RIDER Offering
- ▶ Win & Call to Action
- ▶ Extensions of the RIDER Domain



RIDER is an Innovation Lab Project

- ▶ Engage new opportunities by identifying, developing, and promoting **innovative and reusable assets** around data applied to **smarter cities and CAMS** initiatives.
- ▶ Be the **link** between academics, industry experts and IT.
- ▶ Domains of expertise
 - **Big Data and Analytics**
 - Integration with the IBM Intelligent Operations Center (**IOC**)
 - High Performance Computing (**HPC**)



Data
Data
Data
Data
Data
Data

The Internet of Things

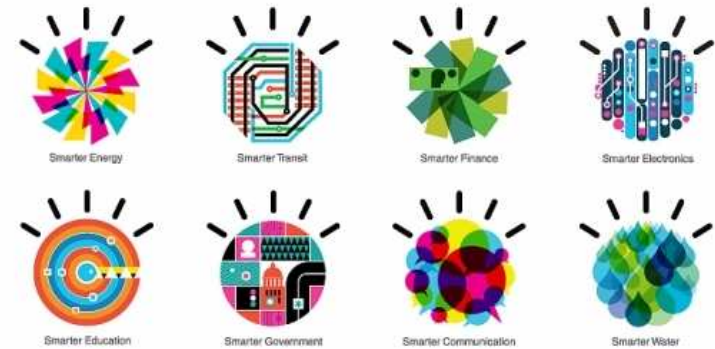


The human brains are not good at correlating large amounts of data

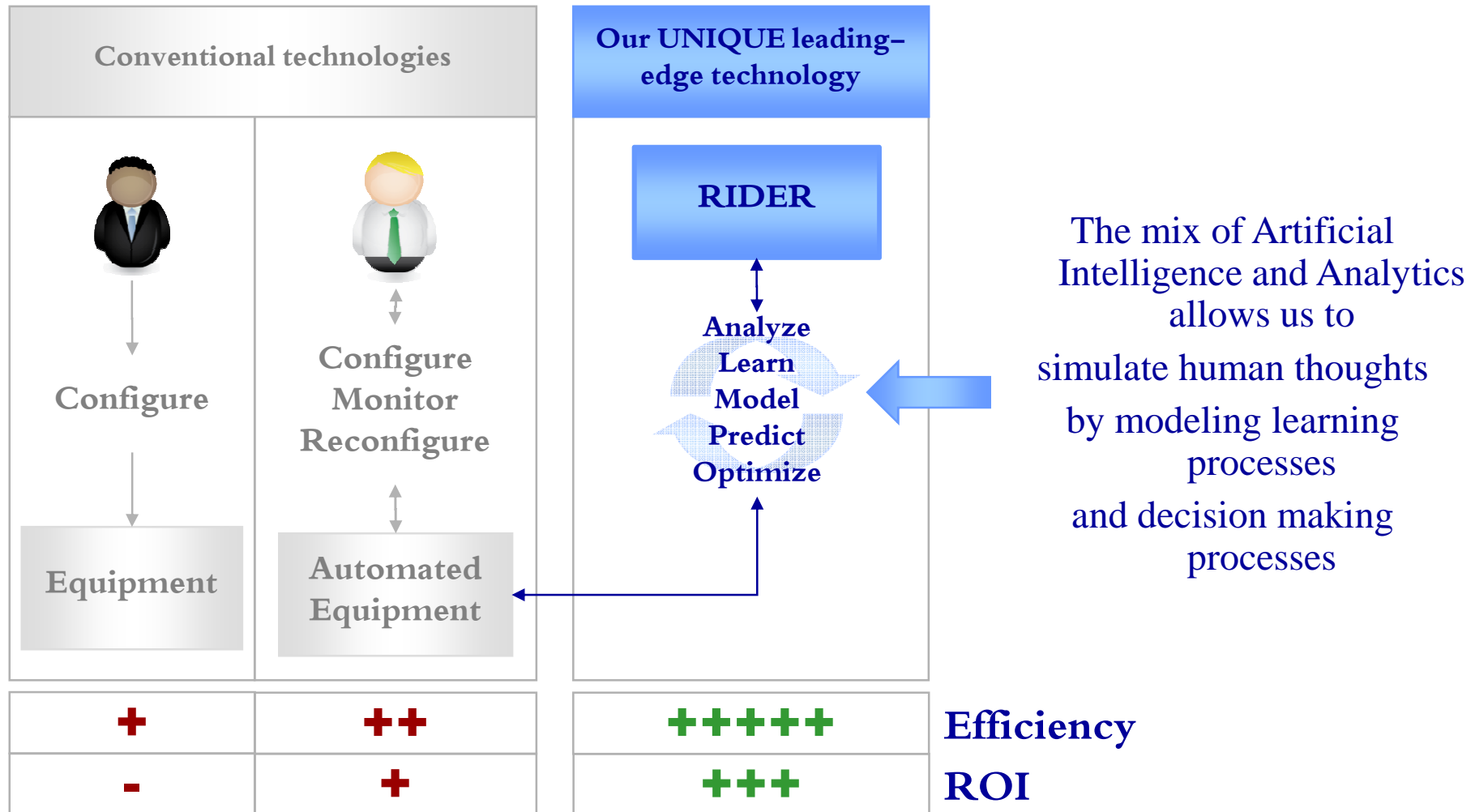
Humans cannot act as fast as and as often as computers do

50 billion of smart devices
connected to the Internet
by 2020

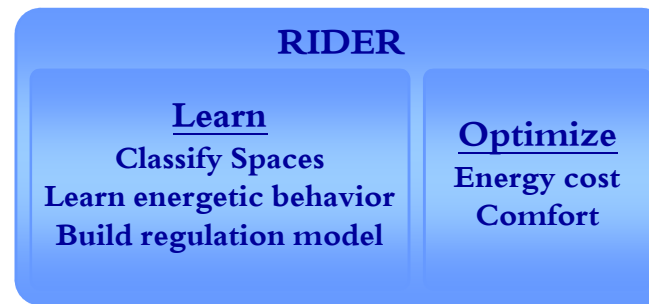
→ In all domains, we need smart tools to
Analyze
Learn
Model
Predict
Optimize
In Real-Time



RIDER: A UNIQUE Asset

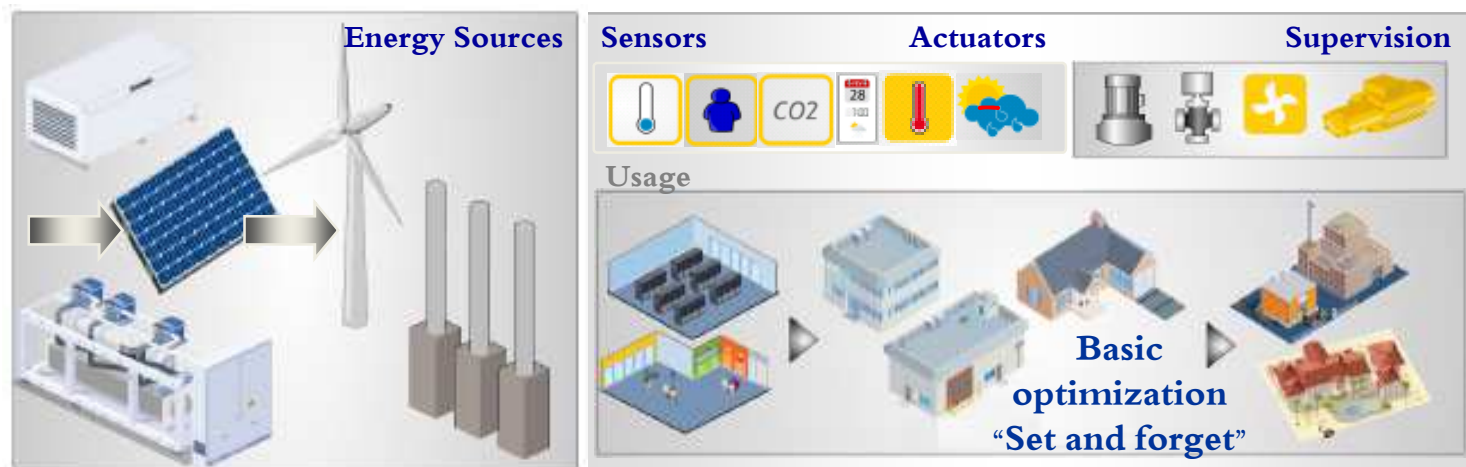


- ▶ **The First Implementation of RIDER** is the successful outcome of a collaborative project carried out at IBM Montpellier together with partners in the region of “Languedoc Roussillon”, France.



Benefits

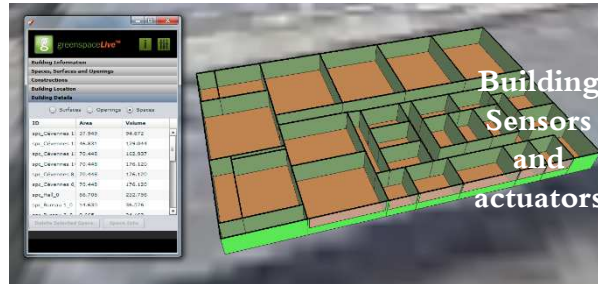
- 👉 Reduction of energy costs **up to 30%**
- 👉 Reduction of CO2 emissions
- 👉 Improvement of occupants comfort



Industrial Computing
Site in Montpellier

Built in 1964

One zone with offices
and meeting rooms



RIDER
Analyze
Learn
Model
Predict
Optimize

Day: eco versus comfort

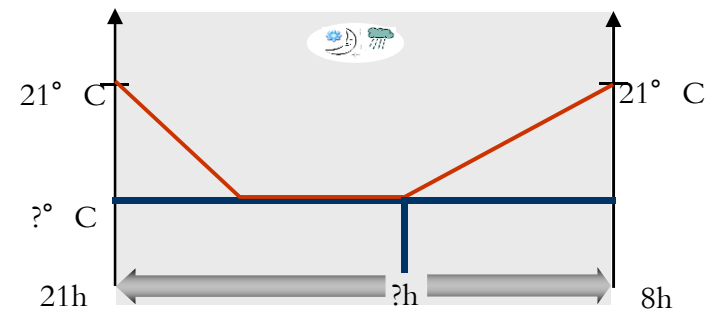
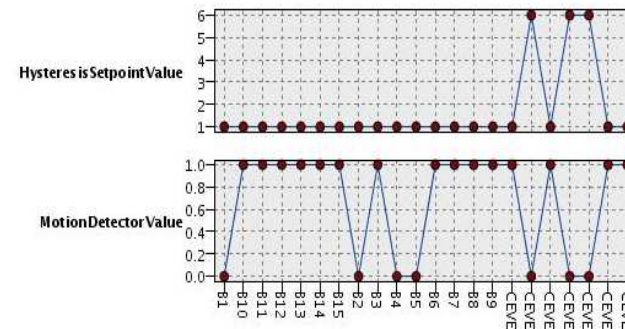
Night: optimal regulation curve

Learning Phase

RIDER learns the “energetic behavior” of the buildings using easy to catch information on buildings

Operational Phase

RIDER uses the learning phase results to regulate a building at minimal cost taking into account the external temperature



Déploiement de RIDER dans un lycée de la ville de Lille



- Optimisation du confort des salles : chauffage et aération
- Optimisation de jour en fonction de l'occupation
- Optimisation de nuit en fonction des conditions climatiques
- + Projet pédagogique

RIDER Offering = Research Asset + Services



Asset

- ▶ **The IBM RIDER Research Asset**
 - IP costs required

- ▶ **IBM SPSS**
 - License Required

- ▶ **IBM DB2 Express C**

- ▶ **Possible integration with**
 - The IOC
 - Tririga, and
 - Other software

Services

- Consulting
- Workshops
- Skill transfer
- Customization and deployment
- Support

If you would like us to know more about RIDER

Contact us

Hervé Dardillac
Innovation Lab Manager

herve_dardillac@fr.ibm.com

Office: +33 (0)4 67 34 63 06
Cell: + 33 (0)6 74 98 23 84

Saniya Ben Hassen
RIDER lead Architect

saniya@fr.ibm.com

Office: +33 (0)4 67 34 49 73
Cell: + 33(0)6 07 90 34 83

Olivier Hess
Innovation Lab
Executive Technical Leader

olivier.hess@fr.ibm.com

Office: +33 (0)4 67 34 48 43
Cell: + 33 (0)6 72 82 68 95