

FIWARE opportunities for SMEs

Ivrea, 2nd December 2014

Barbara Pralio
Fondazione Torino Wireless
barbara.pralio@torinowireless.it

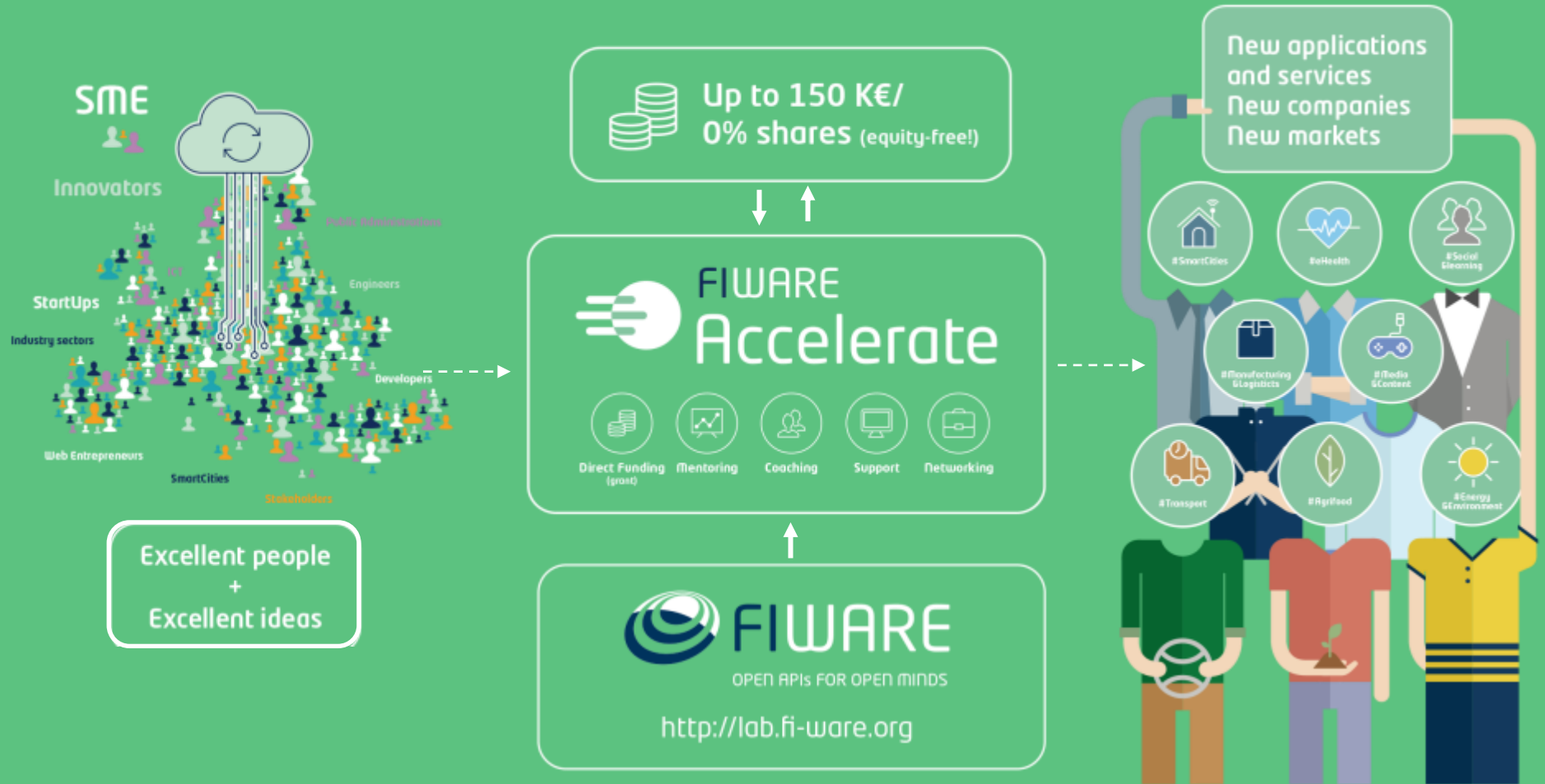


<http://fiware.org>

<http://lab.fiware.org>

FIWARE ACCELERATOR PROGRAMME

Supporting Web entrepreneurs, startups and SMEs



Open in Sept 2014 - www.fiware.org

PART 1

FIWARE and FIWARE Lab

in the FI-PPP

The FI-PPP Programme in summary...

- Has the goal of capturing opportunities derived from the new wave of digitalization of life and businesses
- Building an ecosystem where entrepreneurs, domain stakeholders and technology providers fulfill their needs
- The four main pillars are:



A generic, open standard platform which serves the needs of developers in multiple domains



A meeting point where innovation takes place, and opportunities can be incubated



The suite of tools that ease deployment and operation of FIWARE instance nodes



A program that funds developers and entrepreneurs, and ignites roll-out of the ecosystem

FIWARE BUILDING BLOCKS

FIWARE is based upon a series of elements (called Generic Enablers) which offer reusable and commonly shared functions serving multiple areas of use across various sectors.

FIWARE Generic Enablers are classified into the following FIWARE Technical Chapters:

1.

Cloud hosting

The fundamental layer which provides the computation, storage and network resources on top of which services are provisioned and managed.

2.

Data/Context Management

The enablers easing access, gathering, processing, publication and analysis of data at large scale, transforming it into valuable knowledge available to applications.

3.

Architecture of Applications/ Services Ecosystem and Delivery Framework

The framework to co-create, publish, cross-sell and consume applications/services, addressing all business aspects.

4.

Interface to Networks and Devices (I2ND)

The enablers to make the most of underlying network infrastructure capabilities.

5.

Security

The mechanisms which ensure that the delivery and usage of services is trustworthy and meets security and privacy requirements.

6.

Internet of Things (IoT) Services Enablement

The bridge where Future Internet services interface and leverage the ubiquity of heterogeneous, resource-constrained devices in the Internet of Things.

7.

Advanced Middleware and Web-based User Interface

A set of enablers that make it easy to incorporate 3D & Augmented Reality capabilities in web-based user interfaces, plus the most efficient backend middleware ever.

The FIWARE Catalogue

- catalogue.fiware.org a kind of executive summary per Generic Enabler

[Home](#) [Enablers](#) [Tools](#) [Forum](#) [Login / Register](#) [FI-WARE Catalogue](#)



Hosting enablers
for creation of
FUTURE INTERNET
APPLICATIONS

Welcome to the FI-WARE Catalogue! Here you will find all the info
a Generic Enabler Implementation.


About the Catalogue



View the Enabler



[Overview](#) [Creating Instances](#) [Documentation](#) [Downloads](#) [Instances](#) [Terms and conditions](#)



Chapter:
Applications/Services Ecosystems
and Delivery Framework

Version:
3.4.2

Updated:
2014-10-08

Contact Person:
Javier Soriano (UPM)
Dr. Javier Soriano
(jsoriano@fi.upm.es) School of
Computer Science Universidad
Politécnica de Madrid Campus de
Montegancedo s/n 28660
Boadilla del Monte, Madrid
(Spain)

What you get

Wirecloud builds on cutting-edge end-user development, RIA and semantic technologies: mashup platform aimed at leveraging the long tail of the Internet of Services.

Web application mashups integrate heterogeneous data, application logic, and UI components to create coherent and value-adding composite applications. They are targeted at leveraging the development, DIY, and shareability. They typically serve a specific situational (i.e. immediate) need, with potential for reuse. Is this "situational" character which preclude them to be offered as a generic service.

Note: Wirecloud is at the core of the FIWARE infrastructure and is therefore intended to be used to configure a new instance of the FIWARE instance node. It is not intended to be deployed as a standalone application. However, you can use [the global instance of Wirecloud provided in the FIWARE Lab](#). Nevertheless, we provide recipes and blueprints to install it in the Cloud portal (using the PaaS Manager), a

Why to get it

Web application mashups can be manually developed using conventional web programming skills and, hence, target end users, being them citizens, knowledge workers, etc.

By using Wirecloud you have access to the following key features:

- Innovate through experimentation by choosing the best suited widgets, operators, and filters from the ever-growing distributed catalogue
- The wiring editor allows you to easily connect widgets in a mashup to create a full application
- The piping editor allows you to easily connect widgets to back-end services or data sources



FIWARE Lab: the “meeting point” where innovation takes place



App Customers and Data providers

- Connect to entrepreneurs
- Put their data at work
- Bring new innovative services to end users
- Be more efficient
- Social Reputation

Entrepreneurs, Developers

- Develop once for a large market
- Easily meet potential customers
- Marketing, promotion
- Ability to test with real data and end users
- Simple yet powerful APIs that accelerate product development



FIWARE Technology Providers

- “Coopetitive” approach
- Connect to entrepreneurs: jointly exploit the opportunities

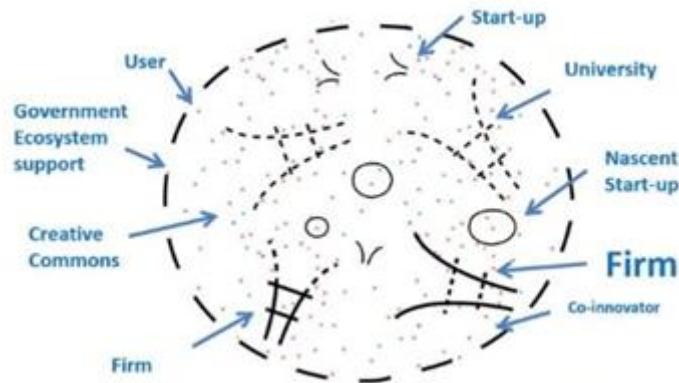
- 4,2 M€ promotion campaign
 - Campus Party events
 - Startup Weekend events
 - Chambers of Commerce
 - 870 K€ in prizes
- 100 M€ of funding devoted to entrepreneurs in phase 3 of the FIWARE program



FIWARE Lab: the “meeting point” where innovation takes place

A live instance of FIWARE
available to developers for **free**
experimentation

Not only platform, tools...this is
powered by data!



Data in FIWARE Lab

Welcome to FIWARE Lab Data

Welcome to the FIWARE Lab Data Portal, a data portal for Cities and organizations to offer Data to be used by developers and entrepreneurs for experimentation.

"SMART CITIES ARE OF STRATEGIC INTEREST FOR ALL OF US"
FI-WARE for Smart Cities

Groups

Gestione del territ... (193)

Welfare (162)

Economia (114)

Demografia (91)

Conoscenza (67)

Amministrazione (59)

Ambiente (18)

Turismo (15)

Mobilità (13)

Meteo (10)

Show More Groups

Tags

agenda 21 (82)



CSV

FiWare CitySDK Lisbon Tourism Information

FiWare CitySDK Lisbon Tourism Information

CSV

evolucion abonos demo sevilla CF

demo sevilla para carga de datasets

CSV

Valencia carga electrica

Copia de Valencia Carga Eléctrica para pruebas

CSV

fiware-gtfs-carris

GTFS data for CARRIS (Lisbon bus agency)

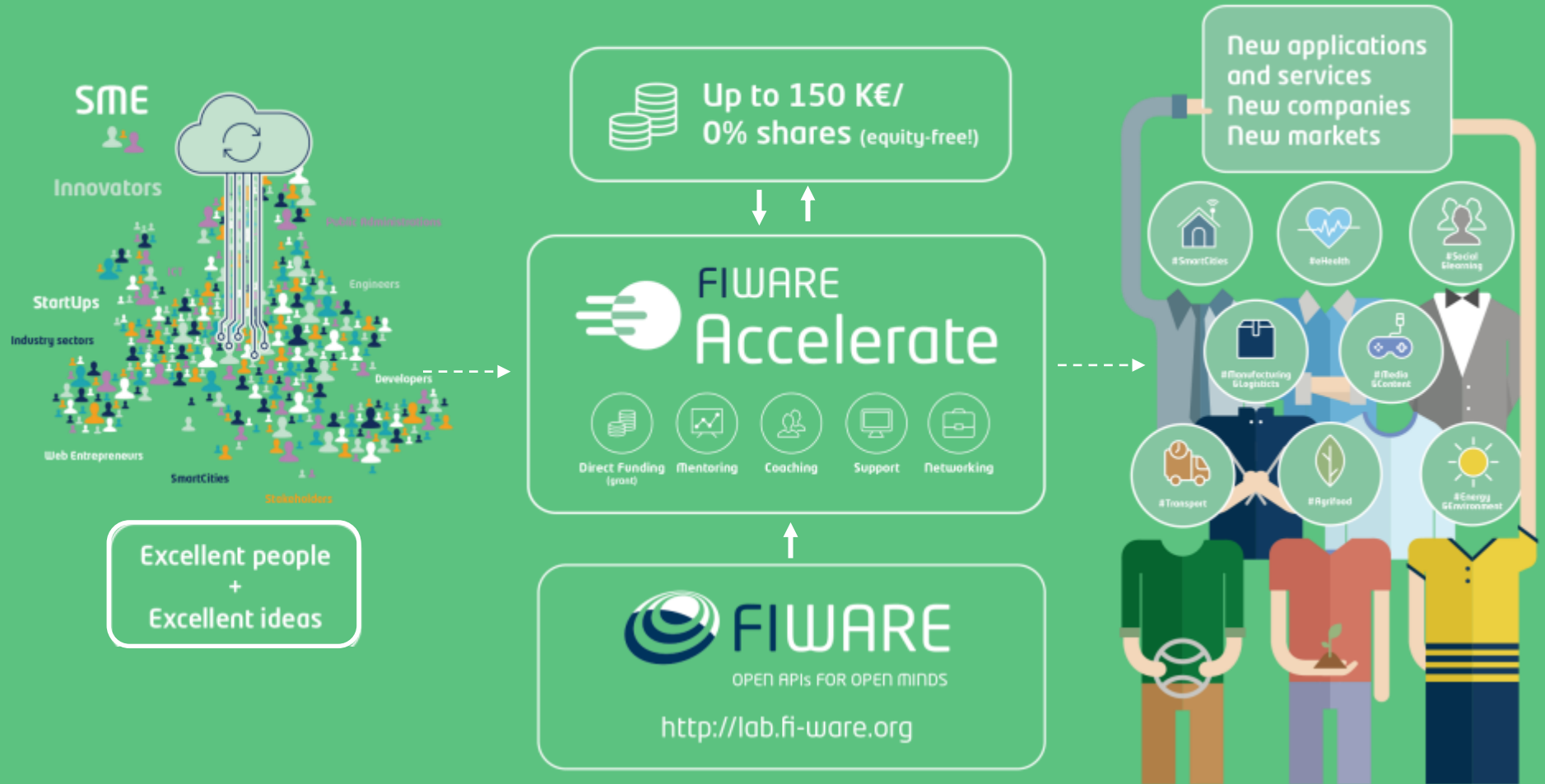
CSV

PART 2

FIWARE Accelerator Program

FIWARE ACCELERATOR PROGRAMME

Supporting Web entrepreneurs, startups and SMEs



Open in Sept 2014 - www.fiware.org

Opportunities from the FIWARE Accelerator program



What makes the FIWARE Accelerator program in Europe something different

This is a massive opportunity for all European startups that need help during the first stages of business development. All across Europe, accelerators specialized in different sectors will provide:



Direct Funding
(equity-free!)



Mentoring



Coaching



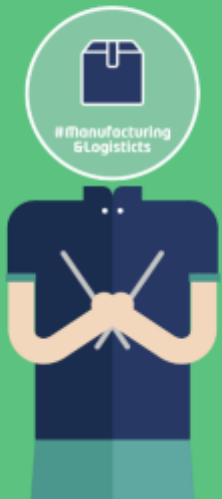
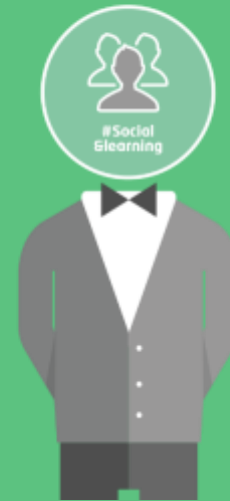
Support



Networking

<http://www.fi-ware.org/accelerators/>

We are organized by sectors



FIWARE Accelerators

New applications
and services
New companies
New markets



16 FIWARE Accelerators

16 Different acceleration and
financing programs

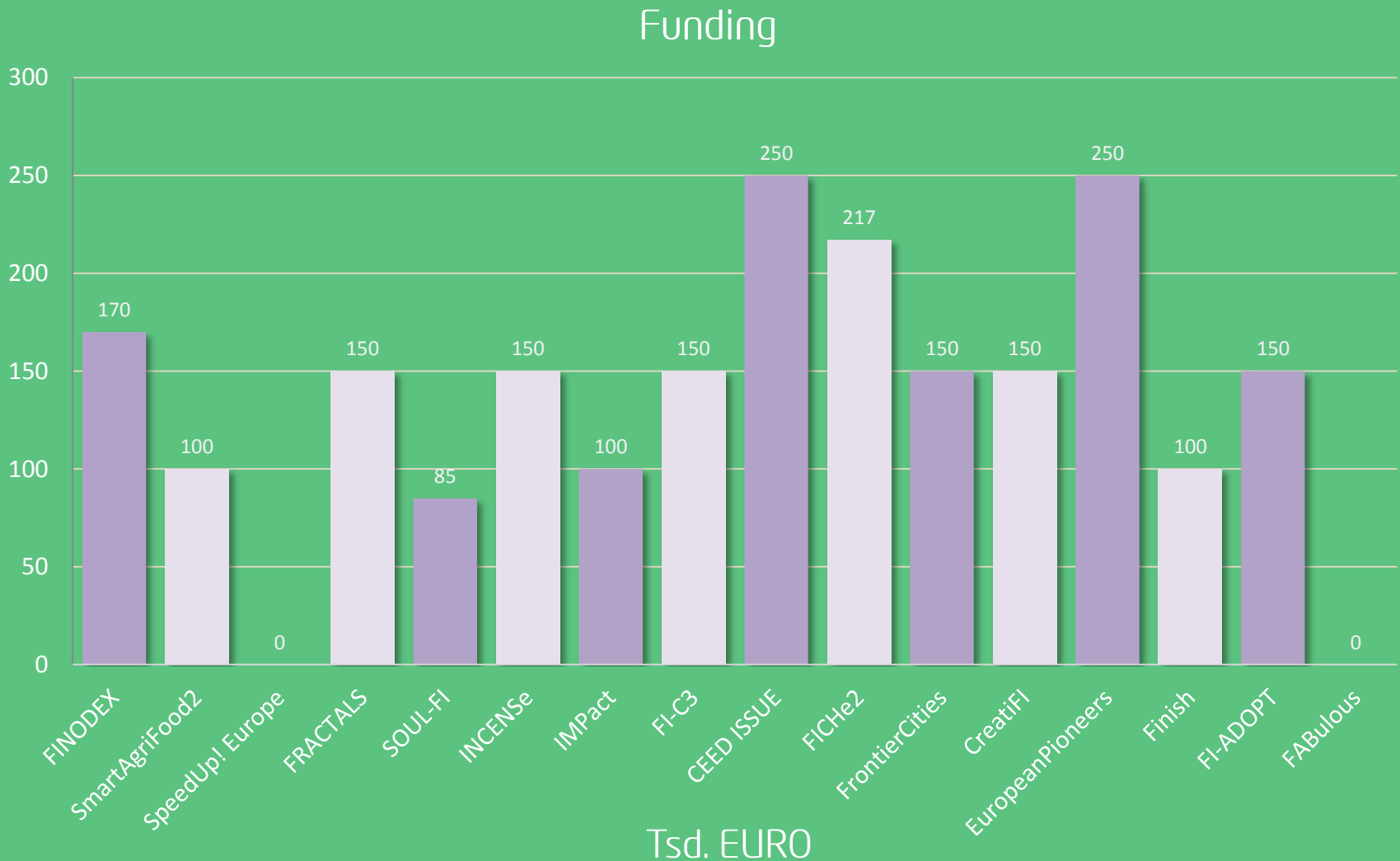
We want to reach YOU!

We want to select YOU (the best)!

We want YOU to be successful!

16 Different Programs

Funding "up to..." (Tsd. EUR)



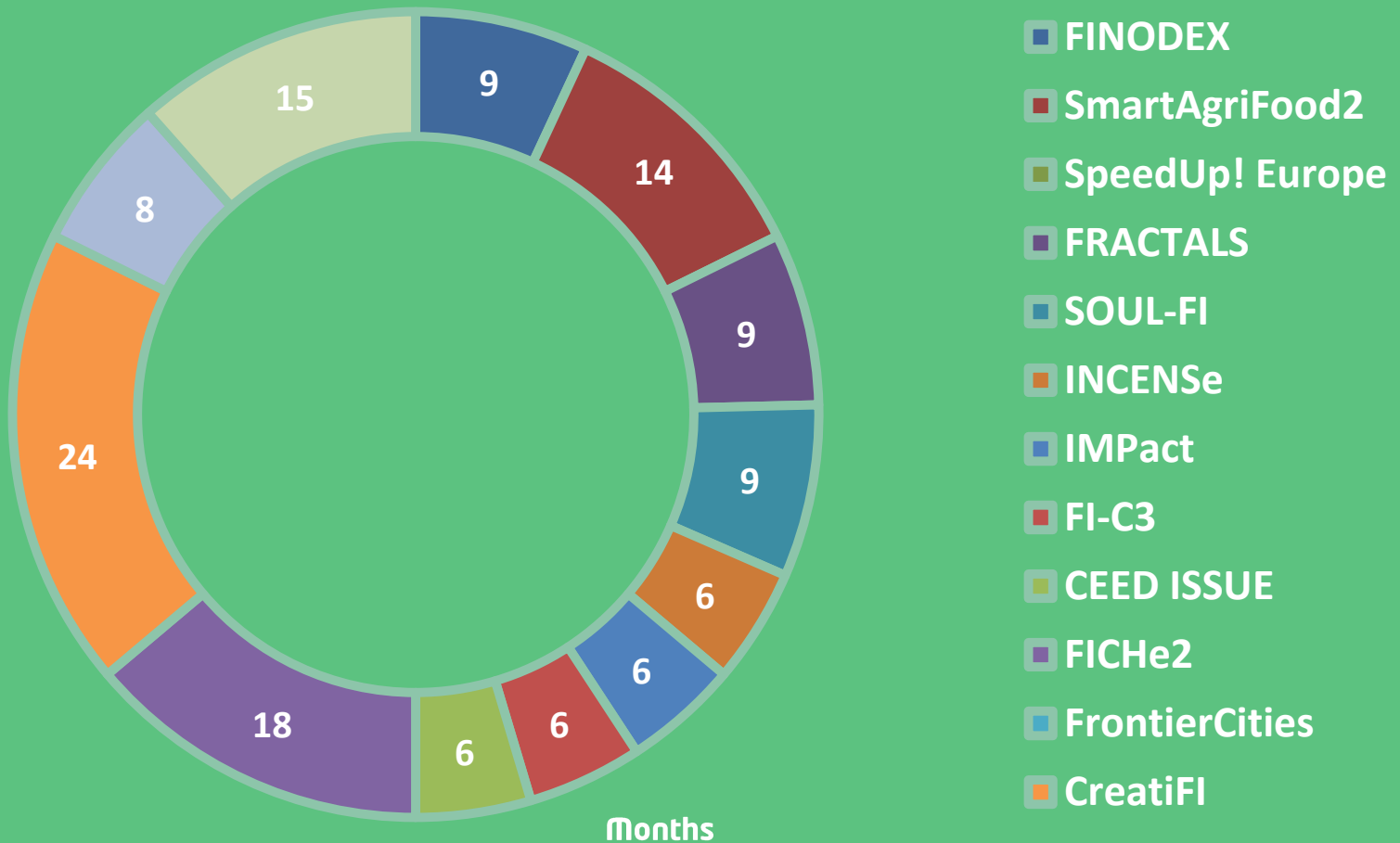
16 Different Programs

Nr. of Sub-grantees, "up to..."



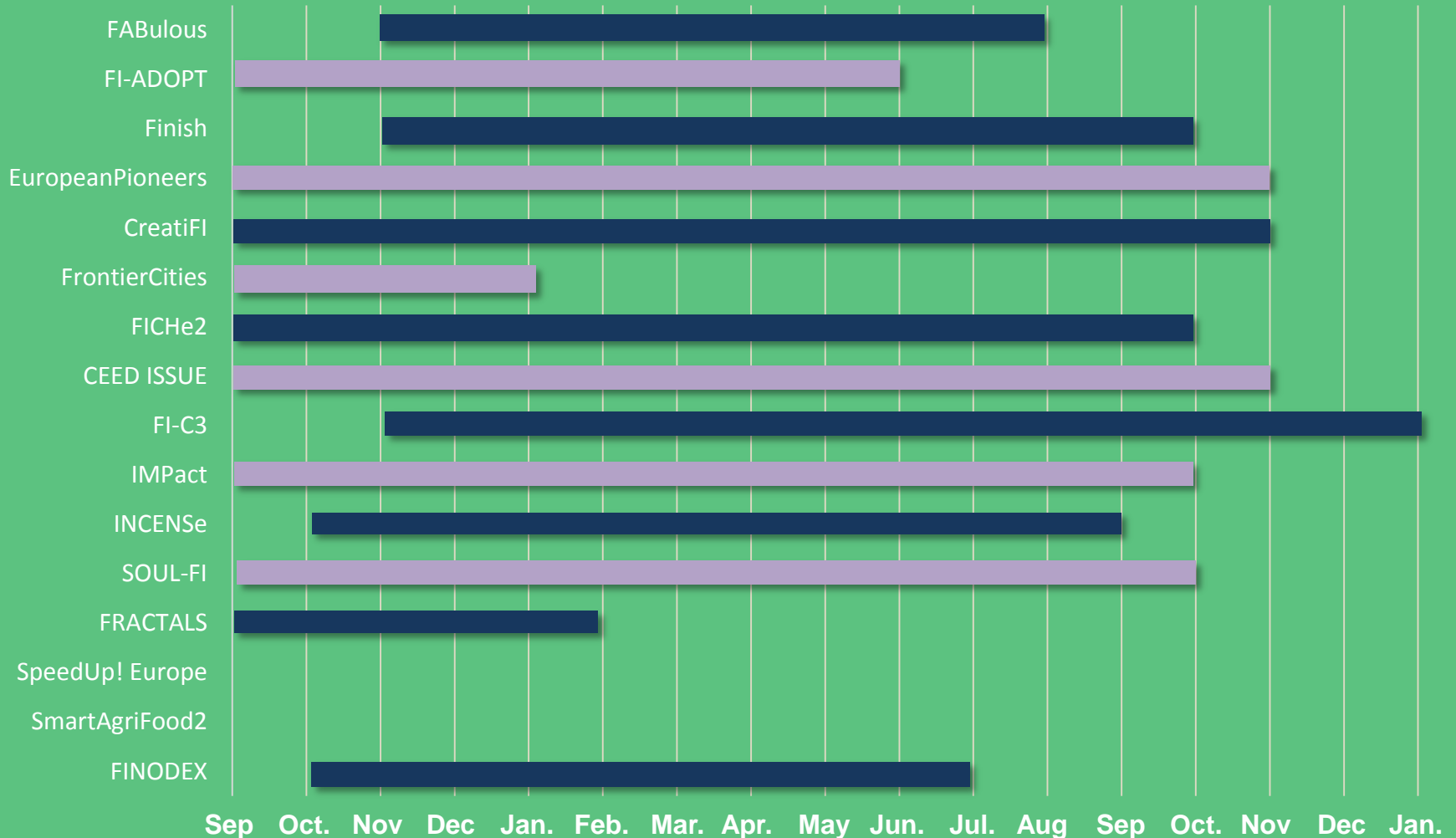
16 Different Programs

Acceleration program duration, "up to..."

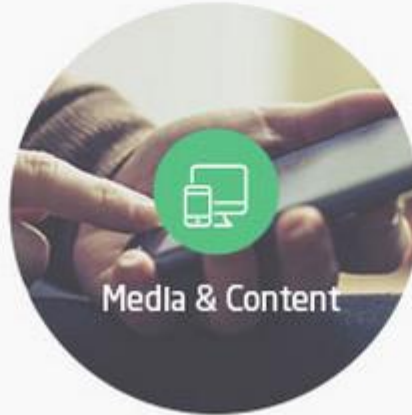


16 Different Programs

Calls timeline




FIWARE Accelerators - Sectors



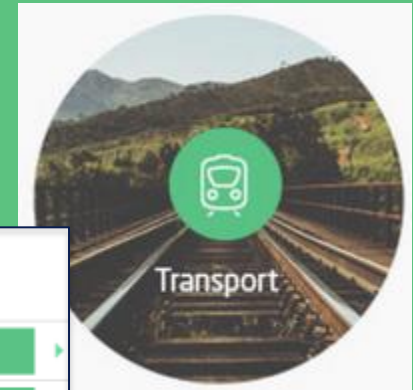
<http://www.fi-ware.org/accelerators/>


FIWARE Accelerators



 Smart cities	
CEED Tech	Apply Now ▶
EuropeanPioneers	Apply Now ▶
FI-C3	Apply Now ▶
frontierCities	Apply Now ▶
IMPACT	Apply Now ▶
INCENSE	Apply Now ▶
SOUL-FI	Apply Now ▶
SpeedUP!	Apply Now ▶

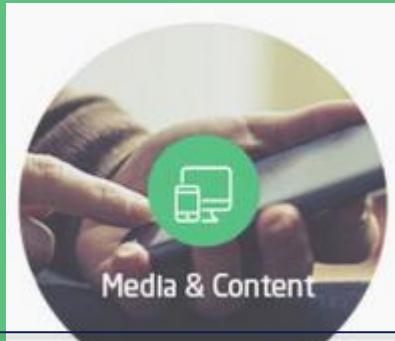
 Transport	
SOUL-FI	Apply Now ▶
Finodex	Apply Now ▶
Finish	Apply Now ▶
frontierCities	Apply Now ▶





 Energy & Environment	
SOUL-FI	Apply Now ▶
INCENSE	Apply Now ▶
Finodex	Apply Now ▶
CEED Tech	Apply Now ▶
SpeedUP!	Apply Now ▶

reuse of open data to promote
the creation of innovative ICT
services and products

FIWARE Accelerators

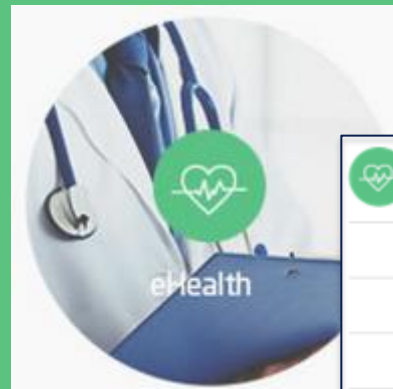



 Media & Conte	
CreatiFI	▶
IMPACT	▶
CEED Tech	Apply Now ▶
FI-C3	▶
EuropeanPioneer	▶
FABulous	Apply Now ▶

 Social & Learning	
SOUL-FI	Apply Now ▶
IMPACT	▶
FI-ADOPT	▶
EuropeanPioneers	▶



reuse of open data to
promote the creation of
innovative ICT services and
products



 eHealth	
FI-ADOPT	▶
Finodex	Apply Now ▶
FI-C3	▶
FICHe	Closed ▶

FIWARE Accelerators



Agrifood		
FRACTALS	Apply Now	▶
Finish	Apply Now	▶
SmartAgriFood	Closed	▶
SpeedUP!	Apply Now	▶

Manufacturing & Logistics		
FABulous	Apply Now	▶
CEED Tech	Apply Now	▶
Finish	Apply Now	▶





Join the innovation ecosystem

Thank you!



Funded by
the European Union

"This project has received funding from the European Union's Seventh Framework Programme for research, technological development and demonstration under grant agreement no 632814"

- Cosa offriamo:
 - **Orientamento:** supporto interpretativo al bando e identificazione ambito prioritario dello sviluppo progettuale
 - **Help Desk interpretativo:** verifica della rispondenza del progetto ai temi del bando e ai criteri di ammissibilità e di valutazione
 - Valutazione della bozza di proposta progettuale, compilata al 70%, verificando il possibile superamento dei livelli minimi richiesti per "**Eccellenza Tecnica**", "**Livello di utilizzo della tecnologia FI-WARE**", "**Market Readiness**".
- A chi viene fornito
 - PMI appartenenti al **Polo ICT** o imprese interessate al servizio che intendono aderire al Polo.
- A quali condizioni
 - L'applicazione prevede l'utilizzo dei **Generic & Specific Enablers FI-WARE**
 - L'applicazione ha elementi **d'innovazione tecnologica** (rispetto allo stato dell'arte), i **potenziali utilizzatori e i loro benefici** sono chiaramente identificati.
 - L'idea progettuale deve essere presentata sul **format del Polo ICT** (modulo di richiesta)

Thanks!



OPEN APIs FOR OPEN MINDS

www.fiware.org
@Fiware 



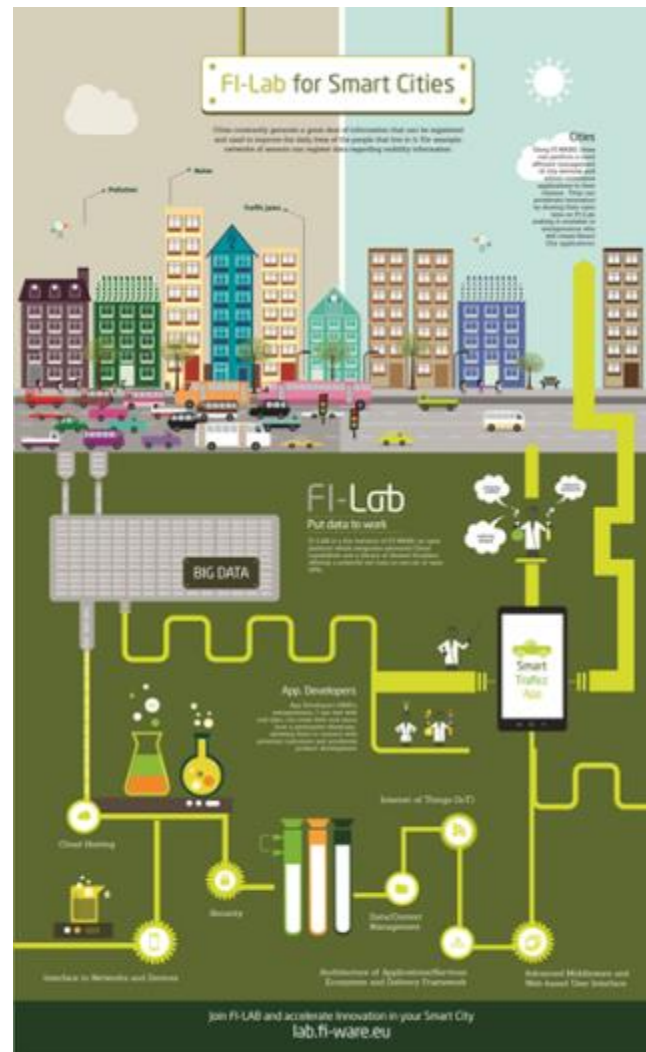
Funded by
the European Union

PART 3

FIWARE and Torino Smart City

FIWARE Lab for Smart Cities

- Neelie Kroes at Campus Party Europe in London (full speech [here](#)):
 - *"Smart cities are a great example ... They create platforms, and use them, making open data and applications available – to citizens, to developers, to innovators, to come up with yet more ideas ... and this is where initiatives like the FI-LAB come in. Led by industry, this is a major investment in generic technology."*
- Cities connecting to FIWARE Lab putting their data at work
- Involvement of Smart Cities in FIWARE
- Challenge to engage developers in building applications about smart cities



Cities connected to FIWARE Lab



FIWARE and Torino Smart City



In 2013, the Torino municipality developed its

SMART CITY MASTERPLAN

through the SMILE project,
especially prioritizing

URBAN SECURITY

The municipality declared its interest in:

- supporting the connection to the FIWARE Lab through the **publication of Open Data** in the Urban Security domain
- experimenting the **adoption of FIWARE technologies** as basis for the development of applications/services for smart city



FIWARE and Torino Smart City



The municipality declared its interest in:

- supporting the connection to the FIWARE Lab through the **publication of Open Data** in the Urban Security domain
- experimenting the **adoption of FIWARE technologies** as basis for the development of applications/services for smart city

Connecting Torino to FIWARE Lab

Supporting the connection to the FIWARE Lab through the **publication of Open Data** in the Urban Security domain

Dataset selection

Non-emergency calls made by citizens to the Local Police



Why this information has been selected?

Connecting Torino to FIWARE Lab



Why this information has been selected?

- strongly related to **citizens' participation and engagement** on urban quality of life ... more and more a relevant issue for Smart Cities
- relevant **opportunities for developing solutions** for improving security policy making, enhancing co-operation between citizens and police, increasing feeling of security
- information about citizen engagement on urban security is **not already available as open data**
- data characterised by **highly sensitive nature** requires to cope with issues related to its publication and use

Connecting Torino to FIWARE Lab

Supporting the connection to the FIWARE Lab through the **publication of Open Data** in the Urban Security domain

Publication on Torino Open Data Portal



<http://aperto.comune.torino.it/?q=content/segnalazioni-al-contact-center-della-polizia-municipale>

Connecting Torino to FIWARE Lab


Supporting the connection to the FIWARE Lab through the **publication of Open Data** in the Urban Security domain

Uploading on FIWARE Lab Data Portal

Welcome to FIWARE Lab Data

Welcome to the FIWARE Lab Data Portal, a data hub for Smart Cities and organizations to offer Data to be used by developers and entrepreneurs for experimentation.

"SMART CITIES ARE OF STRATEGIC INTEREST FOR ALL OF US"
FI-WARE for Smart Cities



Groups

- Gestione del territ... (193)
- Welfare (162)
- Economia (114)
- Demografia (91)
- Conoscenza (67)
- Amministrazione (59)
- Ambiente (18)
- Turismo (15)
- Mobilità (13)
- Meteo (10)
- Show More Groups

Tags

- agenda 21 (82)

CSV

FiWare CitySDK Lisbon Tourism Information
FiWare CitySDK Lisbon Tourism Information

CSV

evolucion abonos demo sevilla CF
demo sevilla para carga de datasets

CSV

Valencia carga electrica
Copia de Valencia Carga Eléctrica para pruebas

CSV

fiware-gtfs-carris
GTFS data for CARRIS (Lisbon bus agency)

CSV

FIWARE and Torino Smart City

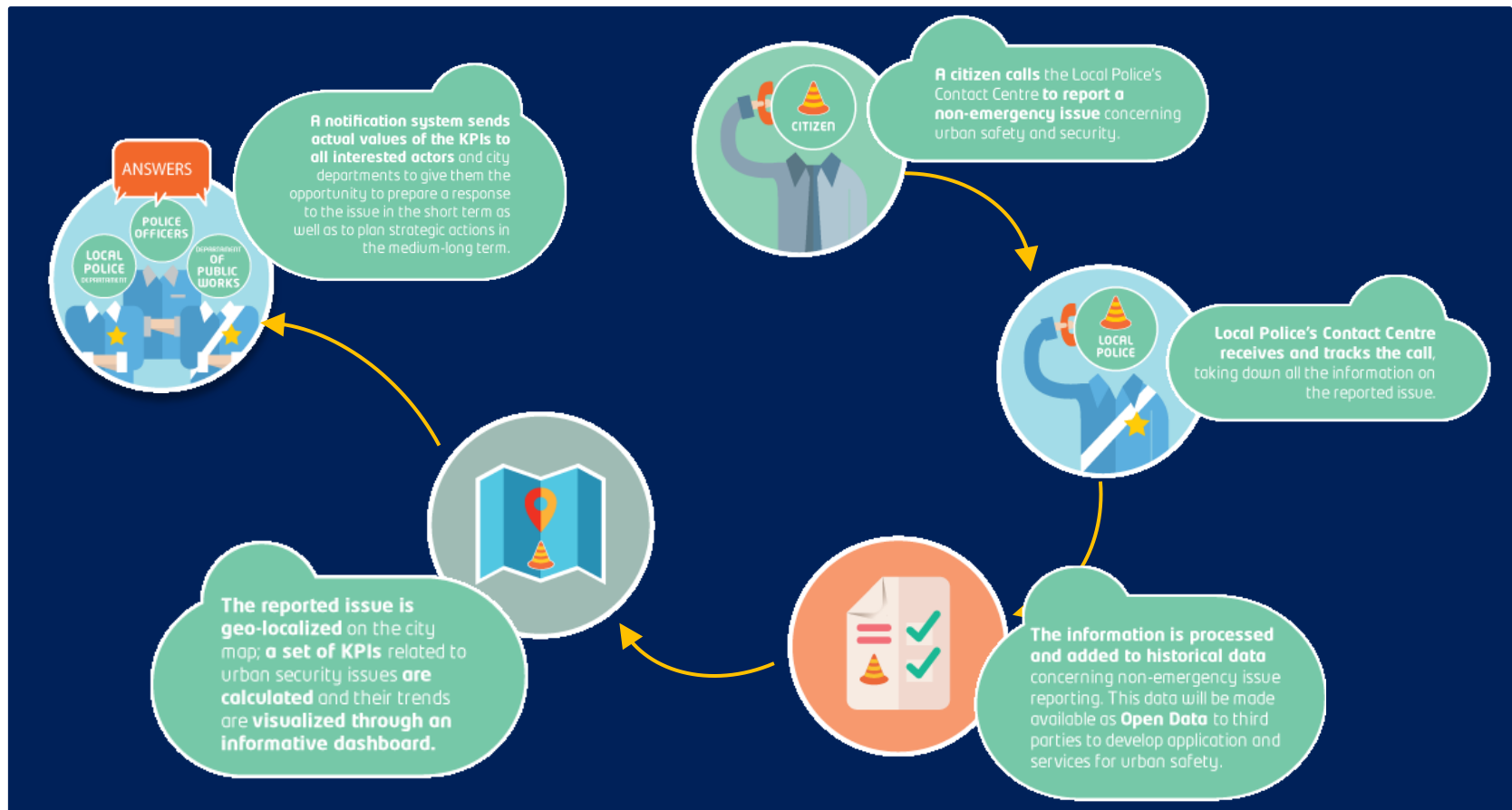


The municipality declared its interest in:

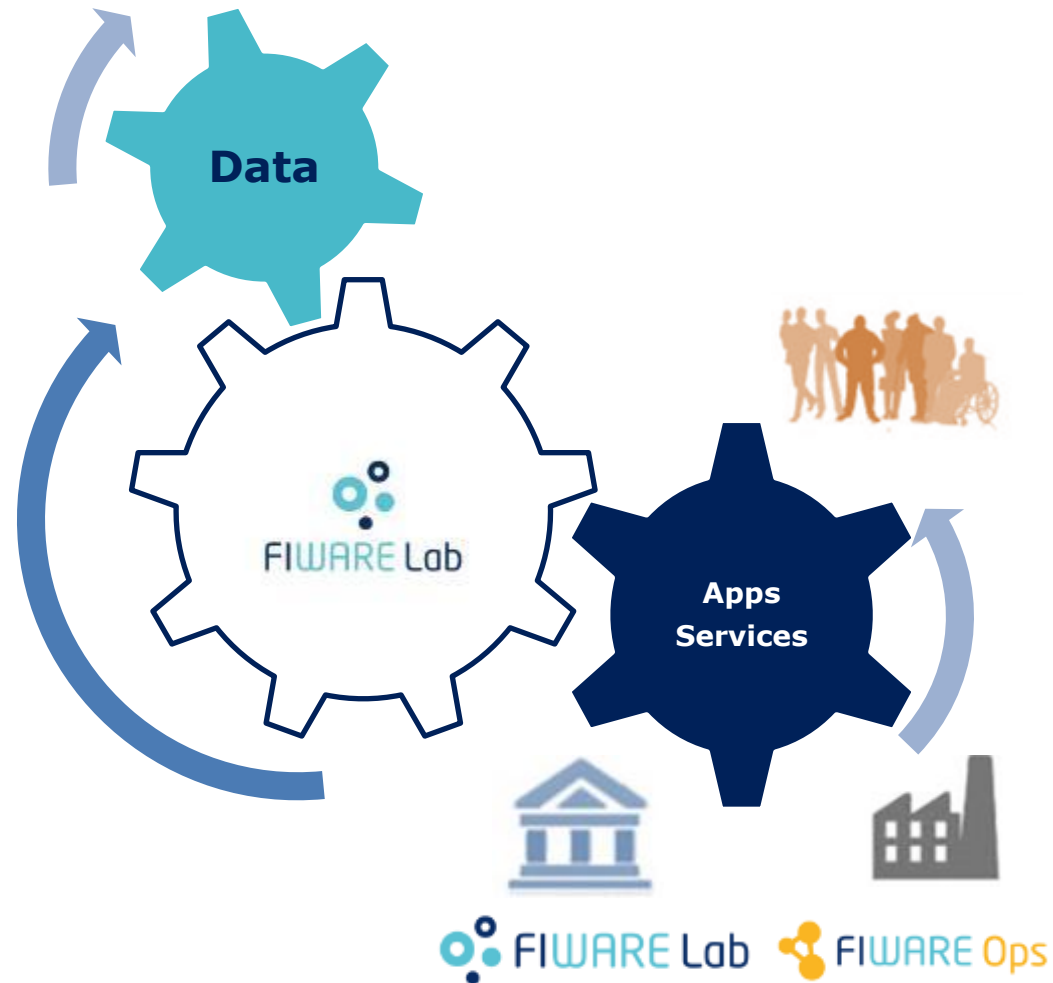
- supporting the connection to the FIWARE Lab through the **publication of Open Data** in the Urban Security domain
- experimenting the **adoption of FIWARE technologies** as basis for the development of applications/services for smart city

Experimenting innovative applications

Testing applications/services for smart city based on the **adoption of FIWARE technologies** and using the information made available as open data



FIWARE and Torino Smart City projects



Thanks!



OPEN APIs FOR OPEN MINDS

www.fiware.org
@Fiware 



Funded by
the European Union

FIWARE Accelerators - sectors

FI Accelerator Project	Domain
CEED Tech	Smart cities, Energy & Environment, Media & Content, Manufacturing&Logistics
CreatiFI	Media & Content
EuropeanPioneers	Smart cities, Media & Content, Social & Learning
IMPACT	Smart cities, Media & Content, Social & Learning
FABulous	Media & Content, Manufacturing & Logistics
FI-C3	Smart cities, eHealth, Media & Content
FICHe	eHealth
FI-ADOPT	eHealth, Social & Learning
FINODEX	eHealth,Transport, Energy & Environment
SmartAgriFood	Agrifood
FRACTALS	Agrifood
Finish	Transport, Agrifood, Media & Content, Manufacturing & Logistics
SpeedUp!	Smart cities, Energy & Environment, Agrifood
INCENSE	Smart cities, Energy & Environment
frontierCities	Smart cities, Transport
SOUL-FI	Smart cities, Transport, Energy & Environment, Social & Learning

FIWARE Accelerators - Open Calls

FI Accelerator Project	First Call	Second Call	Third Call
CEED Tech	15 Sept 2014 - 15 Dec 2014	July - Oct 2015	
CreatiFI	01 Oct 2014 - 30 Nov 2014	01 Sept 2015 - 30 Sept 2015	
EuropeanPioneers	01 Sep 2014 - 31 Oct 2014	Feb 2015	July 2015
IMpaCT	29 Sept 2014 - 07 Nov 2014		
FABulous	01 Nov 2014	02 Jun 2015	
FI-C3	01 Nov 2014 - 30 Nov 2014	01 May 2015	01 November 2015
FICHe	15 Sept 2014 - 31 Oct 2014		
FI-ADOPT	15 Sept 2014 - 30 Oct 2014	15 Dec 2014 - 30 Jan 2015	15 Mar 2015 - 30 Apr 2015
FINODEX	07 Oct 2014 - 19 Dec 2014	May 2015 - July 2015	
SmartAgriFood	15 Sept 2014 - 15 Nov 2014		
FRACTALS	30 Nov 2014 - 28 Feb 2015		
Finish	29 Oct 2014 - 10 Dec 2015	15 March 2015 - 30 Apr 2015	
SpeedUp!	5 Sept 2014 - 10 Dec 2014		
INCENSE	15 Oct 2014 - 15 Jan 2015	June 2015 - September 2015	
frontierCities	20 Nov 2014 - 14 Jan 2015		
SOUL-FI	15 Sept 2014 - 31 Oct 2014	01 Nov 2014 - 27 Feb 2015	28 Feb 2015 - 26 Jun 2015